



# GAT MONTHLY MEMBERSHIP PROGRESS REPORT

Results as of: 8/31/2023

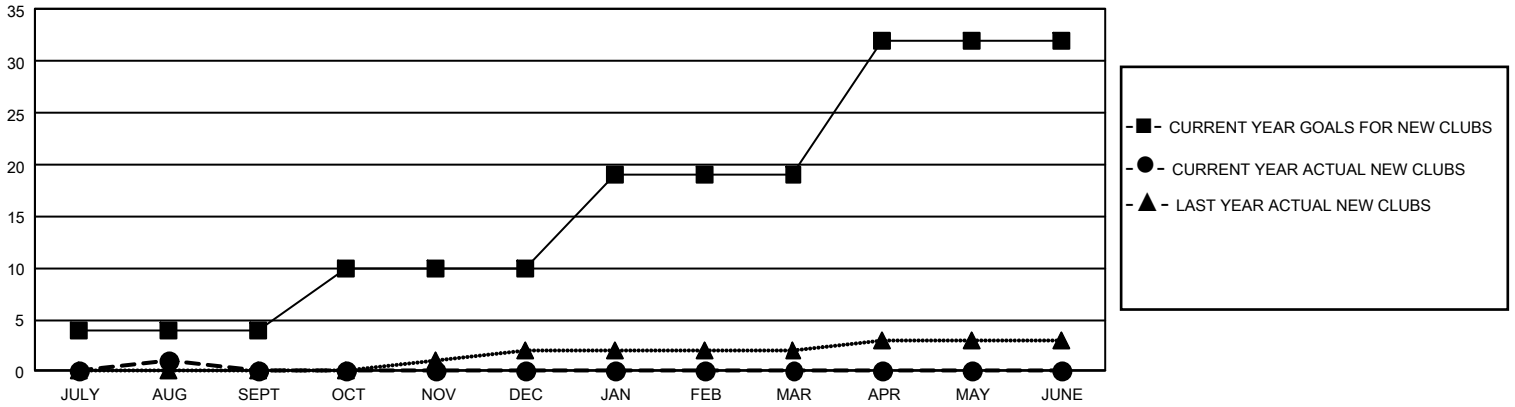
## GMT Constitutional Area 1, Group G

REPORT DOES NOT INCLUDE CLUBS IN UNDISTRICTED AREAS.

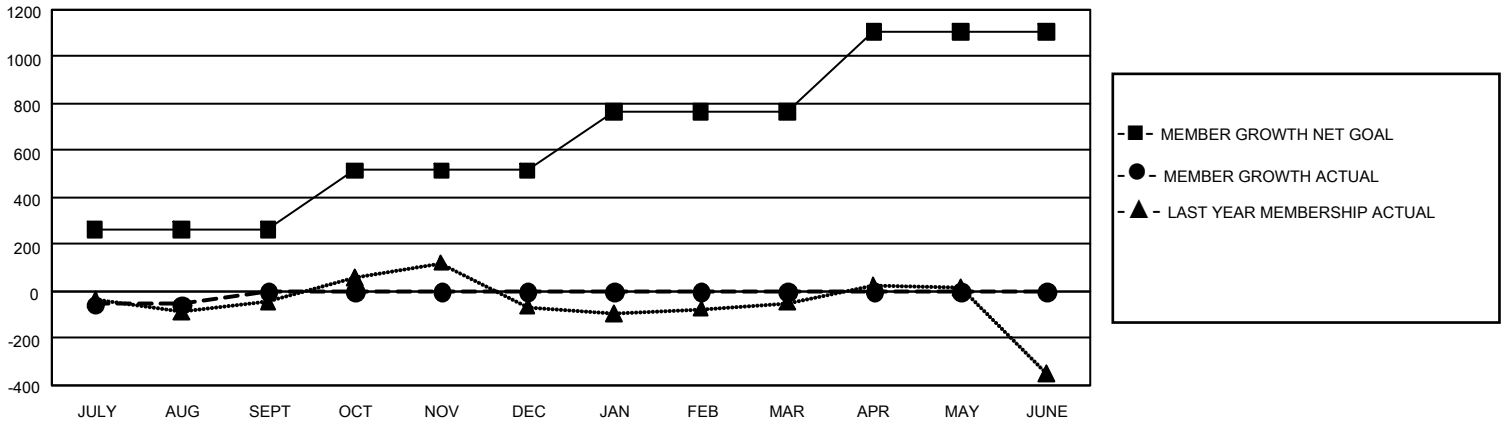
Clubs			
RESULTS FOR 2023-2024			
QUARTER	NEW CLUB GOAL	NEW CLUBS	DROPPED CLUBS
JULY/AUG/SEPT	12	1	3
OCT/NOV/DEC	18	0	0
JAN/FEB/MAR	27	0	0
APR/MAY/JUNE	39	0	0

Members			
RESULTS FOR 2023-2024			
QUARTER	MEMBER GROWTH NET GOAL	MEMBER GROWTH ACTUAL	DROPPED MEMBERS ACTUAL (including transfers)
JULY/AUG/SEPT	264	361	378
OCT/NOV/DEC	252	0	0
JAN/FEB/MAR	250	0	0
APR/MAY/JUNE	340	0	0

GOALS AND ACTUAL NEW CLUBS CUMULATIVE



GOALS AND ACTUAL MEMBERS CUMULATIVE



<b>DROPPED CLUBS: 3</b>	131 CLUBS OF 842 ADDED 1 OR MORE NEW MEMBERS	<b><u>GENDER DISTRIBUTION</u></b>	
		MALE 11,792 (63.80%) FEMALE 6,689 (36.19%) NON BINARY 0 (0.00%) PREFER NOT TO ANSWER 2 (0.01%)	
<b><u>DROPPED MEMBERS</u></b>		<a href="#">CLICK HERE FOR CUMULATIVE MEMBERSHIP DATA</a>	TOTAL FAMILY UNIT MEMBERS 4,086
DECEASED 35 CLUB CANCELLED 9 OTHER 338 <b>TOTAL 382</b>	FAMILY MEMBERS PAYING HALF DUES 2,097		